



WELLSUN GREEN ENERGY LIMITED
Warehouse No 1 Cooperation Ave MFEZ Chambishi



• 太阳能逆变器

• 储能电池

• 太阳能控制器

• 光伏组件

• UPS

• EPS



让世界永不停电

Convenient
for you
**Never
Power Off**
Inverter

公司简介

COMPANY PROFILE



190+
190+国家出口经验
190+ countries export
experience

20+
20+制造经验
20+ Manufacturing
experience

10000+
成功合作案例
10000+
Successful Cases

OEM/ODM
OEM/ODM定制
销售服务
OEM/ODM orders
Sales and service

Company profile

Wellsun Green Energy Limited Won the title of high-tech enterprise and innovative enterprise. It has been deeply engaged in the power energy industry for more than 20 years, and is a cutting-edge manufacturing enterprise focusing on dry green energy and emergency power energy products for safety protection. Abundant spirit of "ingenuity seiko" of professional fine God, practice in China's advanced manufacturing, committed to the creation of solar inverters, solar energy systems; Energy storage lithium battery, lead-acid battery; Reverse storage integrated safety emergency electricity Source, UPS, Industrial EPS. To provide users with green, energy-saving, safe and reliable uninterrupted power energy.

权威证书，质量保证 AUTHORITATIVE CERTIFICATE, QUALITY ASSURANCE

严格遵守ISO质量管理体系，产品已通过UL, CE, IEC, ROHS, SONCAP, SASO, PVOC和其他认证。我们旨在为全球用户提供绿色，节能和安全的电器安全应急产品。

Strictly comply with ISO quality management system, products have passed UL, CE, IEC, ROHS, SONCAP, SASO, PVOC and other certifications. We aim to provide the green, energy-saving and safe electrical energy safety emergency products for global users.



精工制造，品质优良 PRECISION MANUFACTURE, GOOD QUALITY

在中国和马来西亚拥有20年生产经验，有三大生产基地。拥有先进的设备和仪器，并建立了自动化生产线。

20 Years industrial experience with three production bases in China & Malaysia. Owns advanced equipment and instruments and builds Automatic production line.



优质服务 COURTEOUS SERVICE

拥有优秀专业员工的营销和技术团队专业指导，为您提供周到的服务。

A marketing and technical team with excellent professional staff provides professional guidance and thoughtful service for you.



全球合作 WORLDWIDE COOPERATION

我们为全球数十个国家/地区，众多客户，长期合作伙伴和金牌分销商提供OEM，ODM和高级定制服务。
We serve many customers, long-term partners and excellent distributors from dozens of countries/regions, providing OEM, ODM and advanced customization services.

-
- 2000**
 初创广州白云区电池生产基地，
 树立铅酸蓄电池自主生产的里程碑。
 In 2000, The battery production base in Baiyun District of Guangzhou was founded, which became a milestone in the independent production of lead-acid batteries.
 - 2001**
 自主研发第一台后备式UPS；
 为应急电源生产技术奠定坚实的基础。
 In 2001, The first backup UPS was independently developed; Become a milestone in emergency power production.
 - 2004**
 自主研发第一台互动式UPS；
 科研实力跨上新台阶。
 In 2004, Independent research and development of the first interactive UPS; Scientific research strength has reached a new level.
 - 2006**
 佛山UPS生产基地落成，建立现代化UPS生产和质量体系，
 实现规模化生产。威尔森绿色能源有限公司正式成立。
 In 2006, Foshan UPS production base was completed, establishing modern UPS production and quality system. Achieve large-scale production. Weltsun Green Energy Limited was formally established.
 - 2007**
 科研团队扩大，第一台高频在线式UPS面世；
 In 2007, The scientific research team was expanded, and the first high-frequency online UPS was launched;
 - 2010**
 海外团队成立，放眼全球，走向世界；
 In 2010, Foreign trade team was established, and Techline looked at the world and went to the world;
 - 2011**
 工频式三相系列UPS研发成功，
 正式进军工业应急电源行业；
 In 2011, Low frequency three-phase series UPS was successfully developed and officially entered the industrial emergency power industry;
 - 2013**
 深耕市场，构建全国销售服务体系。
 深圳、广州、成都、沈阳、新疆销售服务中心相继成立。
 为销售服务提供全面升级保障；
 In 2013, Deeply cultivate the market and build a national sales and service system. Shenzhen, Guangzhou, Chengdu, Shenyang, Xinjiang sales and service centers have been established successively to provide comprehensive upgrade guarantee for sales services;
 - 2016**
 潜心研发UPS和电池技术，申请多项专利，
 同年获得广东省高新技术企业认定。
 In 2016, Concentrate on the research and development of UPS and battery technology, apply for several patents, in the same year, it was recognized as a high-tech enterprise in Guangdong Province.
 - 2017**
 工频式逆变器和太阳能铅酸专用电池成功研发，正式迈进新能源行业；
 In 2017, Power frequency inverter and solar lead-acid special battery were successfully developed, officially entering the new energy industry;
 - 2018**
 实现科研、生产、销售体系全面优化升级
 企业形象、实力有了长足发展；更名为
 In 2018, Realize the comprehensive optimization and upgrading of scientific research, production and sales systems. Corporate image and strength have developed by leaps and bounds; Renamed as
 - 2019**
 MPPT太阳能控制器和高端太阳能深循环电池研发成功，打开了太阳能储能行业的新领域；
 In 2019, The successful development of MPPT solar controller and high-end solar deep-cycle battery has opened up a new field in the solar energy storage industry;
 - 2020**
 - 2021**
 智能消防专用电池和EP系列应急电源深受消防
 智能行业用户的喜爱，企业荣获“消防应急灯具
 专用蓄电池领军品牌”称号
 In 2021, Intelligent fire-fighting special batteries and EP series emergency power supplies are deeply loved by users in the fire-fighting intelligence industry. Our company won the title of "Leading Brand of Batteries for Fire Emergency Lamps"
 - 2022**
 突破技术瓶颈，自主研发的高频式逆变器和户用
 储能锂电池正式亮相
 In 2022, Break through the technical bottleneck, self-developed high-frequency inverter and household use Lithium battery for energy storage was officially unveiled





新品全面升级

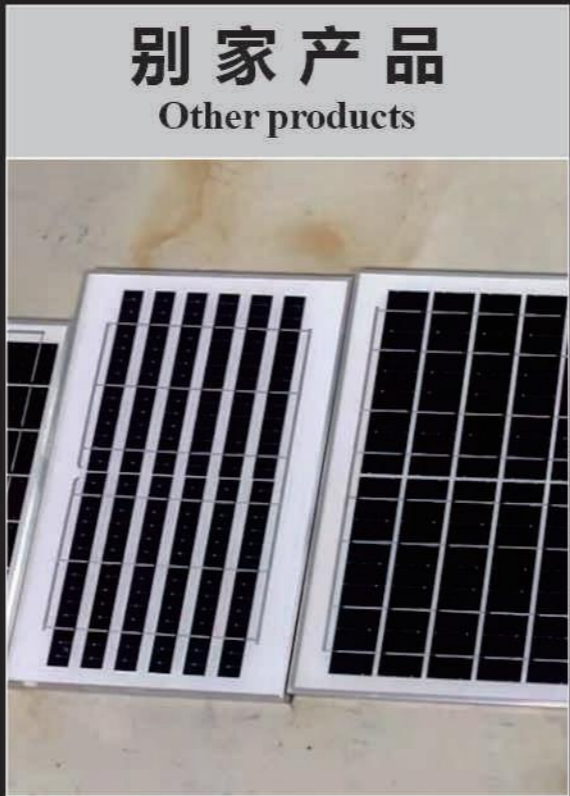
New product comprehensive upgrade



优点
advantage

满焊、间隔小、功率大
Full welding, small interval, high power

高转化率、单晶元伏板
High conversion rate, single crystal cell volt board



别家产品
Other products

缺点
shortcoming

跳焊、效率低
Skip welding, low efficiency

间隔大、虚假功率
Large interval, false power



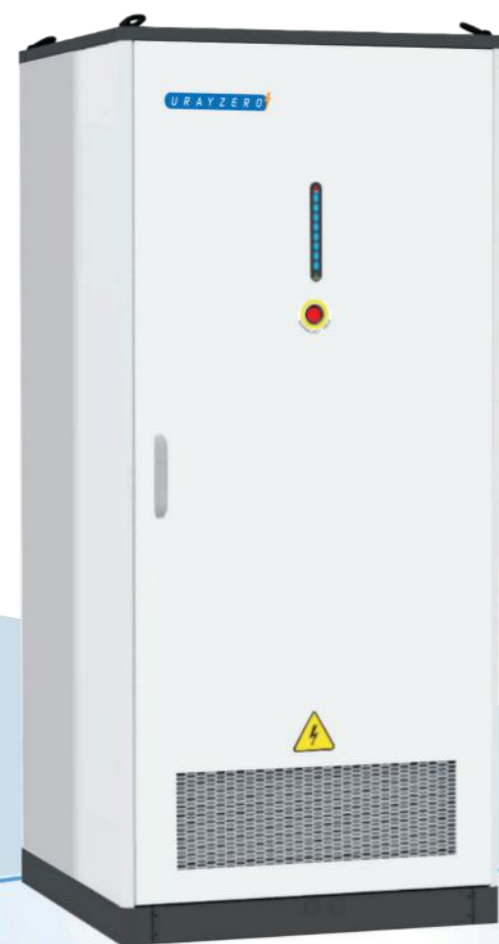
VS

市面同类产品

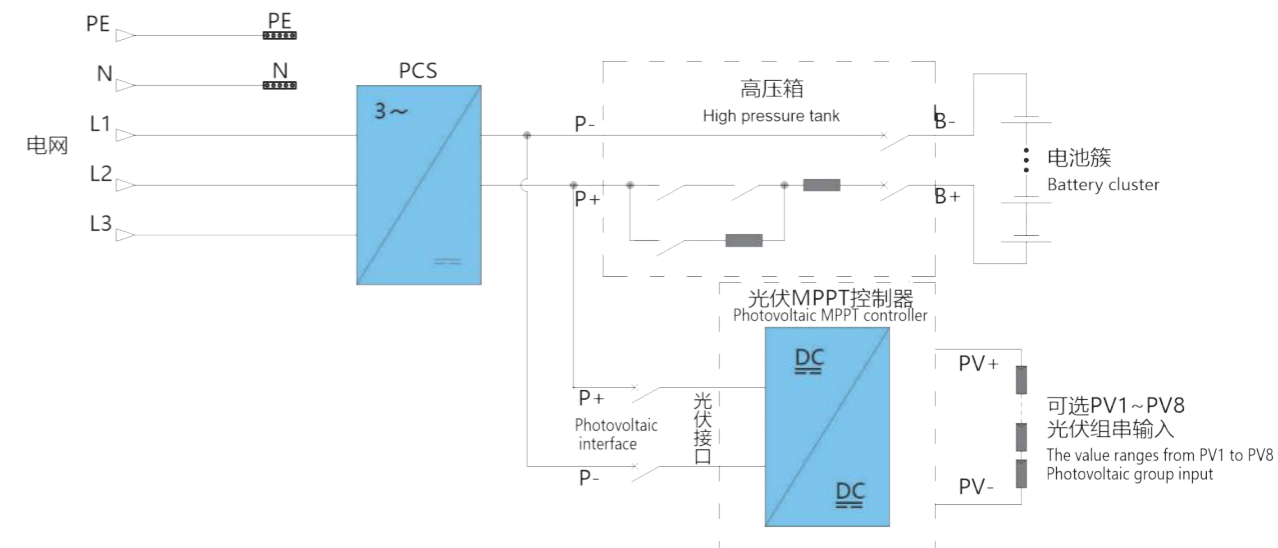




100kW /200kWh /225kWh 光储一体机 Optical storage machine



- 1、灵活匹配，支持多台1+N模式并联使用；
1, flexible matching, support multiple 1+N mode parallel use;
- 2、高功率密度，体积小，占地少，安装运输便捷；
2, high power density, small size, less footprint, convenient installation and transportation;
- 3、支持光伏接入，匹配集散式MPPT控制器；
3, support photovoltaic access, matching distributed MPPT controller;
- 4、可选配离并网切换组件，实现电网停电后的不间断供电；
4, optional off-grid switching components, to achieve uninterrupted power supply after power outage;
- 5、4G、WIFI在线智能监控，远程巡检，降低现场人工巡检任务；
5, 4G, WIFI online intelligent monitoring, remote inspection, reduce on-site manual inspection tasks;
- 6、按需调配，削峰填谷自动运行，支持BMS、PCS和EMS系统联动控制，具备多重保护。
6, on-demand deployment, peak cutting and valley filling automatic operation, support BMS, PCS and EMS system connection dynamic control, multiple protections.



系统参数 System parameter

产品型号		GWE200-100k-400-A	GWE225-100k-400-A
直流电池参数 Dc battery parameters	电芯类型 Cell type	LFP 280Ah	LFP 314Ah
	电池Pack容量与配置 Battery Pack capacity and configuration	14.336kWh/1P16S	16.077kWh/1P16S
	电池容量与Pack数量 Battery capacity and number of packs	200kWh/ 14	225kWh/ 14
	电池电压范围 Battery voltage range	627V~806V	627V~806V
	充放电倍率 Charge and discharge ratio		≤0.5C
	放电深度 Discharge depth		95%DOD
	循环次数 Cycle number		>8000
PV侧参数 PV side parameter	温度检测数目 Temperature detection number		112
	最大输入功率 Maximum input power		100kW
	最大输入电流 Maximum input current		160A
	电压范围 Voltage range		627V-806V
交流侧参数 Ac side parameter	交流额定功率 Ac rated power		100kW
	交流最大功率 Ac maximum power		110kW
	交流电流畸变率 Ac current distortion rate		<3%
	直流分量 Dc component		<0.5%I _{pn}
	系统电压制式 System voltage standard		400V
	电网电压范围 Grid voltage model country		360VAC~440VAC
系统参数 System parameter	功率因数 Power factor		-1~1
	额定电网频率 Rated network frequency		50Hz/60Hz
	最大系统效率 Maximum system efficiency		≥89%
	工作温度 Operating temperature		-30 ~ 55°C (超过40度降额使用) (More than 40 degrees derated use)
	相对湿度 Relative humidity		0~95%RH, 无凝露 No condensation
	尺寸(宽×深×高) Dimensions (Width × depth × height)		1050×1050×2350mm
	重量 weight		2100kg
	防护等级 Class of protection		整机 Complete machine IP54
	噪音 noise		<70dB
冷却方式 Cooling mode		风冷 Air cooling	

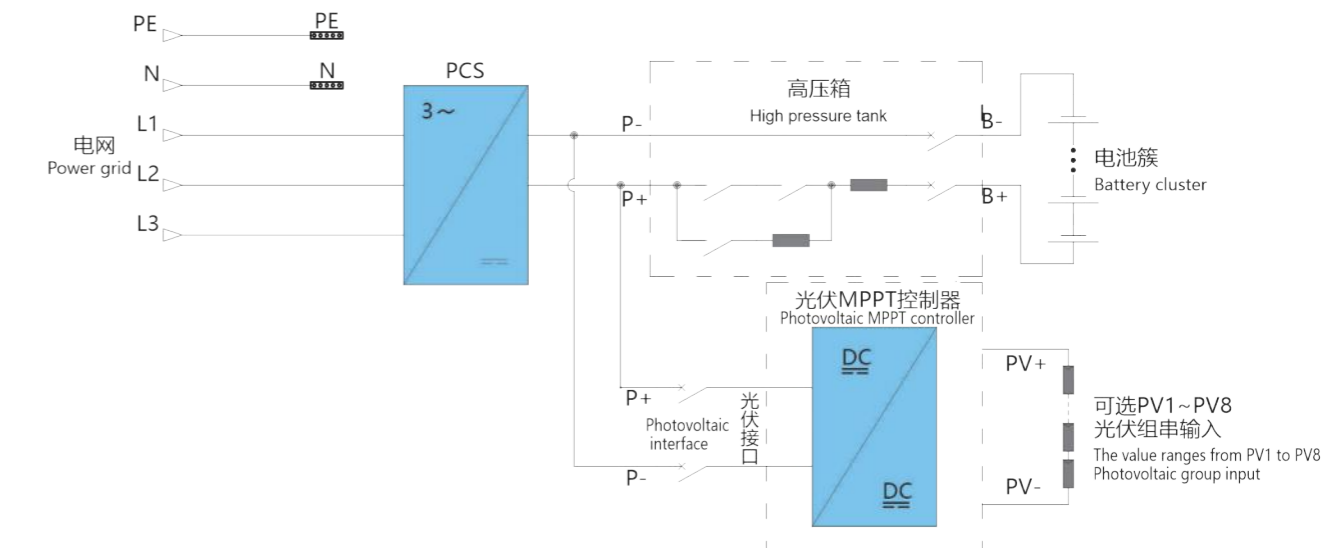


100kW /215kWh、
125kW /260kWh

光储一体机 Optical storage machine



- 1、灵活匹配，支持多台1+N模式并联使用；
1, flexible matching, support multiple 1+N mode parallel use;
- 2、高功率密度，体积小，占地、土建成本低、安装运输便捷；
2, high power density, small size, occupy an area, low civil construction cost, convenient installation and transportation;
- 3、支持光伏接入，匹配集散式MPPT控制器；
3, support photovoltaic access, matching distributed MPPT controller;
- 4、可选配离并网切换组件，实现电网停电后的不间断供电；
4, Optional off-grid switching components to achieve uninterrupted power supply after power outage;
- 5、4G、WIFI在线智能监控，远程巡检，降低现场人工巡检任务；
5, 4G, WIFI online intelligent monitoring, remote inspection, reduce on-site manual inspection tasks;
- 6、按需调配，削峰填谷自动运行，支持BMS、PCS和EMS系统联动控制，具备多重保护；
6, on-demand deployment, peak cutting and valley filling automatic operation, support BMS, PCS and EMS system linkage control, with multiple protection;
- 7、电池液冷，精细化恒温控制管理，电芯温差小，寿命长；
7, battery liquid cooling, fine constant temperature control management, battery temperature difference is small, long life;
- 8、Pack级+整柜消防，全氟己酮快速灭火，高安全可靠。
8, Pack level + whole container fire, perfluorohexanone quick fire, high safety and reliability.



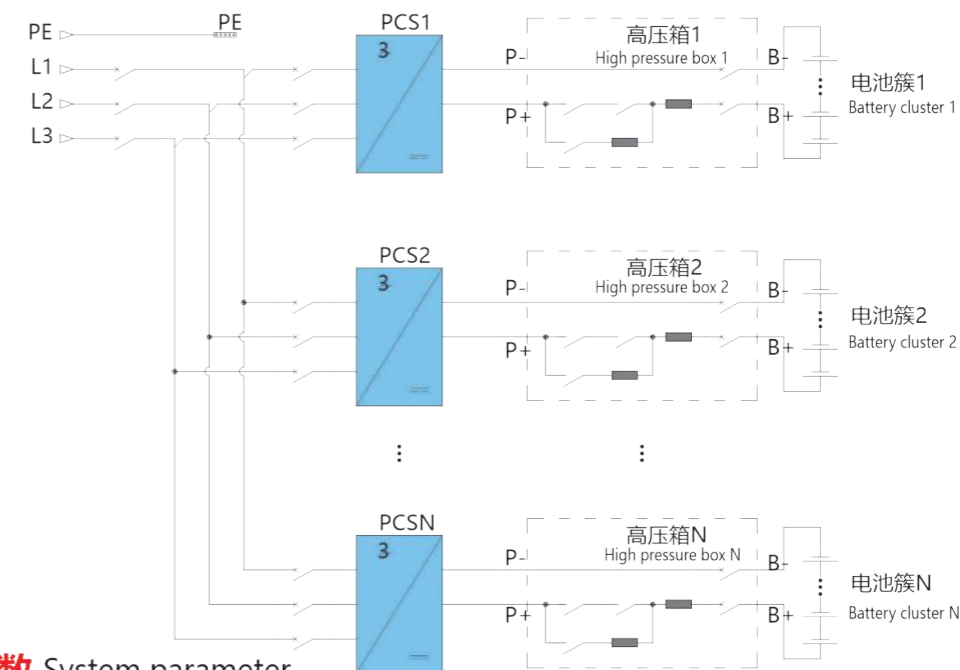
系统参数 System parameter

产品型号		GWE215-100k-400-L	GWE260-125K-400-L
直流电池参数 Dc battery parameters	电芯类型 Cell type	LFP 280Ah	LFP 314Ah
	电池Pack容量与配置 Battery Pack capacity and configuration	43.008kWh/1P48S	52.25kWh/1P52S
	电池容量与Pack数量 Battery capacity and number of packs	215kWh/ 1P240S	260kWh/ 1P260S
	电池电压范围 Battery voltage range	672V ~ 864V	728V ~ 936V
	充放电倍率 Charge and discharge ratio		≤0.5C
	放电深度 Discharge depth		95%DOD
	循环次数 Cycle number		>8000
	温度检测数目 Temperature detection number		160
PV侧参数 PV side parameter	最大输入功率 Maximum input power		100kW
	最大输入电流 Maximum input current		148A
	电压范围 Voltage range	672V ~ 864V	728V ~ 936V
	交流额定功率 Ac rated power	100kW	125kW
交流侧参数 Ac side parameter	交流最大功率 Ac maximum power	110kW	137kW
	交流电流畸变率 Ac current distortion rate		<3%
	直流分量 Dc component		<0.5%I _{pn}
	系统电压制式 System voltage standard		400V
	电网电压范围 Grid voltage model country		360VAC~440VAC
	功率因数 Power factor		-1~1
	额定电网频率 Rated network frequency		50Hz/60Hz
系统参数 System parameter	最大系统效率 Maximum system efficiency		≥89%
	工作温度 Operating temperature		-30 ~ 55°C (超过40度降额使用) (More than 40 degrees derated use)
	相对湿度 Relative humidity		0~95%RH, 无凝露No condensation
	尺寸(宽×深×高) Dimensions (Width × depth × height)		1050×1300×2250mm (含吊环) (including hanging rings)
	重量 weight	2400kg	2600kg
	防护等级 Class of protection	电池 IP67, 整机IP54	Battery IP67, machine IP54
	噪音 noise		<70dB
冷却方式 Cooling mode	电池液冷, PCS风冷	Battery liquid cooling, PCS air cooling	



集装箱储能系统 Container energy storage system

- 1、智能液冷温控，精细化恒温控制管理，电芯温差小，寿命长；
1, intelligent liquid cooling temperature control, fine constant temperature control management, small temperature difference, long life;
- 2、PCS和电池系统两套独立的水路系统，保障系统的高效，降低辅助功耗；
2, PCS and battery system two sets of independent waterway system, ensure the high efficiency of the system, reduce auxiliary power consumption;
- 3、高功率密度，体积小，占地、土建成本低；
3, high power density, small size, occupy an area, low civil construction cost;
- 4、模块化预安装设计，可整机运输，无现场电池安装工作；
4, modular pre-installation design, can be transported, no on-site battery installation work;
- 5、Pack级+整箱消防，全氟己酮快速灭火，高安全可靠；
5, Pack level + whole box fire, perfluorohexanone quick fire, high safety and reliability;
- 6、4G、WIFI和以太网在线智能监控，远程巡检，降低现场人工巡检任务。
6, 4G, WIFI and Ethernet online intelligent monitoring, remote inspection, reduce the field manual inspection task.



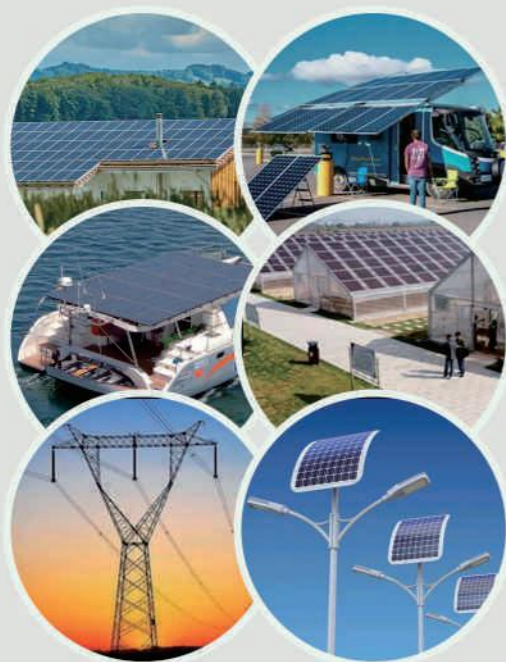
系统参数 System parameter

产品型号		GWE2236- 1260k-690-A	GWE4180- 2100k-690-L
直流电池参数 High pressure box N	电芯类型 Cell type	LFP 280Ah	LFP 314Ah
	电池Pack容量与配置 Battery Pack capacity and configuration	14.336kWh/1P16S	52.25kWh/1P52S
	电池容量与Pack数量 Battery capacity and number of packs	2236kWh/6P 416S	4180kWh/10P 416S
	电池电压范围 Battery voltage range	1165V ~ 1498V	
	温度检测数目 Temperature detection number	1248	2560
	充放电倍率 Charge and discharge ratio	≤0.5C	
	放电深度 Discharge depth	95%DOD	
循环次数 Cycle number	>8000		
交流侧参数 Ac side parameter	交流额定功率 Ac rated power	6*210kW	10*210kW
	交流最大功率 Ac maximum power	6*231kW	10*231kW
	交流电流畸变率 Ac current distortion rate	<3%	
	直流分量 Dc component	<0.5%Ipn	
	系统电压制式 System voltage standard	690V	
	电网电压范围 Grid voltage model country	621VAC~760VAC	
	功率因数 Power factor	-1~1	
系统参数 System parameter	额定电网频率 Rated network frequency	50Hz/60Hz	
	最大系统效率 Maximum system efficiency	≥89%	
	工作温度 Operating temperature	-30 ~ 55°C (超过40度降额使用) (More than 40 degrees derated use)	
	相对湿度 Relative humidity	0~95%RH, 无凝露 No condensation	
	尺寸 (宽×深×高) Dimensions (Width × depth × height)	6058×2438×2896mm	
	重量 weight	<30T	<40T
	冷却方式 Cooling mode	风冷 Air cooling	液冷 Liquid cooling
防护等级 Class of protection	集装箱IP54 Container IP54	电池 IP67, 集装箱IP54 Battery IP67, container IP54	
噪音 noise	<70dB		
联网形式 Networking form	4G/Wifi/以太网 4G/Wifi/ Ethernet		



太阳能逆变器GD系列
SOLAR INVERTER GD SERIES
3000W~5500W

应用范围
Application



产品特性
Features

- 锂电自启, 更好匹配锂电充电
Lithium Battery Auto-restart Function, More Convenient for Lithium Battery Charging
- 智能供电模式, 智能分配太阳能板/市电/电池的电能占比
Intelligent Power Supply Mode, Intelligent Distribution of Solar Panel/Mains/Battery Power Shares
- 市电充电电压/PV充电电压智能可调, 精准匹配各种电池充电要求
Utility Charging Voltage/PV Charging Voltage Adjustable, Match Different Battery Charging Requirements
- 轻薄机身, 方便安装, 方便运输
Slim Body, Convenient Installation And Transportation
- 无熔丝开关电池防反接功能: 安装更安全
Battery Reverse Connection Protection with Fuse Switch, Safer Installation
- 1.0 PF, 高效逆变, 低损耗节能/环保/省电/省钱
PFI.0, High Efficiency, Lower Consumption, Energy Conservation/Environmental Protection/Electricity Saving/Cost Saving
- 支持不带电池工作: 降低系统成本
Support Working without Battery; Reduce Solar System Cost
- 最多可以并机九台, 支持更大容量的负载, 扩容简单
Parallel Function Up to Maximum 9 Units; Enlarge More Loads
- 输出电压精度高, ±5%呵护您的电器
High Precision of Output Voltage, ±5%, Take Care of Your Appliances
- 可以外接wifi, 数据实时化监控
Communication Option: External WIFI, Supervise at Any Time

型号Model		GD3024EMH	GD3024JMH	GD5548JMH
输入 AC Input voltage	输入制式Input Formation	L+N+PE		
	额定输入电压AC Input	208/220/230/240VAC		
	电压范围Input Voltage Range	154-264VAC±3V (正常模式Normal Mode) 185-264VAC±3V (UPS模式UPS Mode)		
	频率范围Frequency	50/60Hz (自适应 Adaptive)		
输出 Output	输出额定功率Rated Power	3000W	3000W	5500W
	输出电压Output Voltage	208/220/230/240VAC±5%		
	输出频率Output Frequency	50/60Hz±0.1%		
	波形 Output Wave	纯正弦波Pure Sine Wave		
	切换时间(可设) Transfer Time(Adjustable)	计算机设备10ms, 家用电器20ms 10ms for Computer Equipment, 20ms for Household Equipment		
	峰值功率Peak Power	6000VA	6000VA	11000VA
	过载能力 Overload Ability	电池模式 Battery Mode : 1min@102%-110% load 10s@110%-130% load 3s@130%-150% load 200ms@>150% load		
	峰值效率(电池模式) Peak Efficiency(Battery Model)	>94%		
电池 Battery	额定电压Rated Voltage	24VDC	48VDC	
	恒压充电电压(可设) Constant Charging Voltage (Adjustable)	28.2VDC	56.4VDC	
	浮充充电电压(可设) Float Charging Voltage (Adjustable)	27VDC	54VDC	
充电器 Charger	PV充电方式PV Charging Method	MPPT		
	PV最大输入功率Max PV Input	3000W	4000W	5500W
	追踪范围MPPT Tracking Range	30-400VDC	120-500VDC	120-500VDC
	最佳Vmp工作范围 Best VMP Working Range	300-320VDC	300-400VDC	300-400VDC
	最大PV输入电压 MAX PV Input Voltage	400VDC	500VDC	500VDC
	最大PV充电电流 MAX PV Charge Current	80A	100A	100A
	最大市电充电电流 MAX AC Charge Current	60A	60A	60A
显示Display	LCD	可显示运行模式/负载/输入/输出等Can display operating mode/load/input/output		
	RS232	5PIN/Pitch2.54mm, 波特率Baud Rate 2400		
	扩展插槽通讯接口 Expansion Slot Communication Interface	2×5PIN/Pitch2.54mm, 锂电池BMS通信卡、WIFI卡、干接点卡等 Lithium Battery BMS Communication Card, WIFI 2×5PIN/Pitch2.54mm		
环境参数 Ambient Temperature	并机接口Parallel Interface	无并机功能 Not Support Parallel	无并机功能 Not Support Parallel	有并机功能Support Parallel
	运行环境温度 Operating Temperature	0°C~40°C		
	储存温度Storage Temperature	-15°C~60°C		
	海拔高度 Ork Altitude	海拔高度不应超过1000m, 1000m以上降额, 最高4000m, 参考IEC62040 to IEC62040 No more than 1000m, if 1000m<.Rate power will lower, MAX 4000m, Refer		
	运行环境湿度Operating Environment Humidity	20%-95%无凝露Non Condensing		
物理参数Dimension	噪音Noise	<50dB		
	深*宽*高L*W*H (mm)	399*285*118	495*312*125mm	
标准和认证 Standards and Certifications		EN-IEC 60335-1, EN-IEC 60335-2-29, IEC 62109-1		



太阳能逆变器UD系列 SOLAR INVERTER UD SERIES 800W~10000W

应用范围 Application



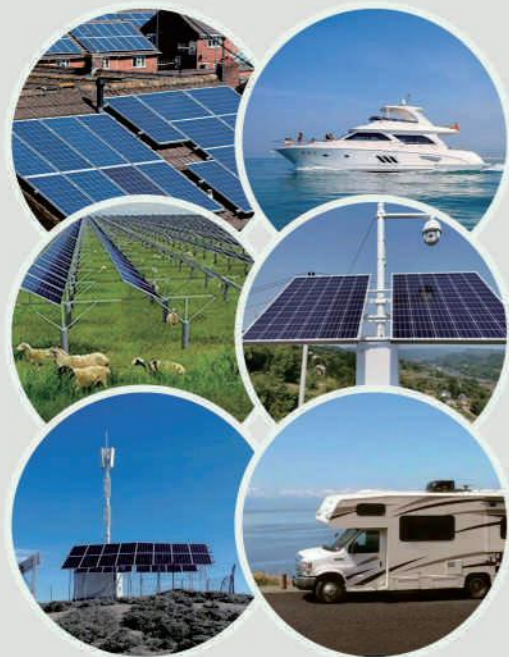
- #### 产品特性 Features
- 纯正弦波输出
Pure sine wave output
 - 可选支持WIFI /GPRS
Can support WIFI / GPRS
 - 控制器MPPT的效率是98%
MPPT efficiency max 98%
 - 可以选内置MPPT/PWM30-60A控制器
Optional built-in MPPT/PWM30-60A controller
 - 直流启动及自动自诊断功能
DC start & automatic self-diagnostic function
 - 可选发电机自启
Automatically send signal to start generator
 - 用于优化电池性能的高效设计
High efficiency design for optimized battery performance
 - 充电电流可调节
Selectable charging current based on applications
 - 可调节市电启动电压, 自动重启电压
AC start-up voltage auto restart voltage
 - 可选铅酸电池/锂电池机型
lead acid battery/lithium battery

型号Model	UDI012AP	UDI512AP	UDI524AP	UD2024AP	UD3024AM	UD5048AM	UD6348AM	UDI0048AM	UDI2548AM	
电源输入AC Input voltage	220VAC(standard)				220VAC(standard)					
输入电压范围Input voltage range	154-275VAC±5V(Nor Model)				154-264VAC±3V(Nor Model)185-264VAC±3V(UPS model) 175-285VAC±3V(AVR Type)					
输入频率Input frequency	50/60Hz±5%				50/60Hz±5%					
额定输出功率Out put power	1000VA 800W	1500VA 1200W	1500VA 1200W	2000VA 1600W	3000VA 2400W	5000VA 4000W	6300VA 5040W	10000VA 8000W	12500VA 10000W	
市电下输出电压 AC model output Voltage	With AVR function 220V±10%				市电下的输出电压跟输入电压一样(带AVR功能220V±10%) The output voltage under the mains is the same as the input voltage(with AVR function 220V±10%)					
市电下输出频率 AC model outout frequency	市电下的输出频率跟输入频率一样 The output frequency under the mains is the same as the input frequency				市电下的输出频率跟输入频率一样 The output frequency under the mains is the same as the input frequency					
逆变下输出电压 Battery model output voltage	220VAC±3%				220VAC±10%					
逆变下输出频率 Battery model output frequency	50HZ or 60HZ±1%				50HZ or 60HZ±1%					
逆变下输出波形 Battery model output wave	正弦波Pure sine wave				正弦波Pure sine wave					
电池类型Battery type	外接铅酸电池, 胶体电池, 水电池或者锂电池 External lead-acid battery,Gel battery, water battery or Lithium battery				外接铅酸电池, 胶体电池, 水电池或者锂电池 External lead-acid battery,Gel battery, water battery or Lithium battery					
电池电压Battery voltage	12VDC	12VDC	24VDC	24VDC	24VDC	48VDC	48VDC	48VDC	48VDC	
电池充电电压 Battery charging voltage	13.75VDC	13.75VDC	27VDC	27VDC	27VDC	54VDC	54VDC	54VDC	54VDC	
最大光伏阵列功率 Maximum PV array power	12V:400W 24V:800W				24V:1600W 48V:3200W					
太阳能输入电压范围 Solar input voltage range	12V: PWM 15V-30VDC 24V: PWM 30V-60VDC				24V:MPPT 30V-150VDC/PWM 30V-60VDC 48V: MPPT 60V-150VDC/PWM 60V-105VDC					
最大光伏阵列开路电压 Maximum PV Display Open Circuit Voltage	12V: PWM 30VDC 24V: PWM 60VDC				24V:MPPT 150VDC/PWM 60VDC 48V:MPPT 150VDC/PWM 105VDC					
最大太阳能充电电流 Maximum solar charging current	30A				60A					80A
最大AC充电电流 Maximum AC Charge Current	20A	30A	18A	20A	30A	21A	29A	48A	60A	
电池充电电压范围 Battery charging voltage range	154-275VAC±5V				154-280VAC					
转换时间Transfer time	≤10ms				≤10ms (UPS模式) / ≤20ms (INV模式)					
负载峰值比load peak ratio	(MAX)3:1									
保护功能Protective function	市电下: 输入过流保险丝Under the mains : input overcurrent fuse 逆变下: 过载保护、短路保护、低压保护, (可带电池防反接板)。 Under inverter: overload protection,short circuit protection, low voltage protection, (with battery anti-reverse connection, board).									
状态显示Status Display	通过翻页键可以查看, AC电压, AC频率, PV电压, PV电流, 输出电压, 输出频率, 电池电压, 负载电流等参数。 You can view parameters such as AC voltage, AC frequency, PV voltage, PV current, output voltage, output frequency, battery voltage, load current and other parameters by turning the page keys.									
声音提示Voice prompt	电池低电保护蜂鸣器长鸣Low battery protection buzzer long beep 电池低电蜂鸣器一秒一鸣Low battery buzzer beeps every second 机器故障蜂鸣器长鸣 Machine fault buzzer beeps 过载蜂鸣器长鸣 Overload buzzer beeps 过载小于130%蜂鸣器一秒一鸣, 30s后关断输出, 超载大于150%时300ms后关断输出 When the overload is less than 130%, the buzzer will sound every second,and the output will be turned off after 30s. When the overload is greater than 150%,the output will be turned off after 300ms.									
工作温度Operating temperature	0°C~40°C									
存放温度Storage temperature	-15°C~45°C									
相对湿度Relative temperature	-10°C~90°C无凝露 no condensation									
噪音Noise	<45dB									
机器尺寸 size (L*W*H)mm	325*263*123MM				512*320*136MM					



太阳能逆变器UD系列 SOLAR INVERTER UD SERIES 4800W~10000W

应用范围 Application



产品特性 Features

- 纯正弦波输出
Pure sine wave output
- 自主研发的PCB板和散热系统, 质量更稳定
Self design PCB board and cooling system
- 充电效率高, MPPT 最大效率可达98%
MPPT efficiency max 98%
- 可选配MPPT太阳能控制器120A
Optional MPPT solar charge controller 120A
- 高效设计和“省电模式”以节省能源
High Efficiency Design & "Power Saving Mode" to Conserve Energy
- 市电恢复自动重启功能
Auto Restart when Ac in recovering
- 内置环形变压器, 防止过载和超高压保护
Built in Transformer, overload and Ultra-high voltage protection
- 带并机功能
Support Parallel
- 智能电池充电器设计, 优化电池性能
Smart battery charger design for optimized battery performance
- 适用于多种电池
Available for many kinds of battery

型号 Model	UD6048AM6B并机版(Support Parallel)	UD12548AM8B并机版 (Support Parallel)
输入容量 Input Capacity (VA)	6000VA	12500VA
标称电压 Nominal Voltage	220VAC	
输入电压范围 Input voltage range	154-265VAC ;185-264VAC可选 (selectable)	
输入频率 Input frequency	50/60Hz自动调整 Auto sensing	
额定功率 Rated power	4800W	10000W
电池电压 Battery Voltage(DC)	48V	
输出频率 Output frequency	50Hz/60Hz	
波形 Waveform	纯正弦波 Pure sine wave	
转换时间 Transfer time(AC to DC)	≤10ms (UPS模式) / ≤20ms (INV模式)	
负载峰值比 Load peak ratio	(MAX)3:1	
输出电压调节 Output Voltage Regulation	±10%	
旁路模式 Bypass Mode	是 (YES)	
保护模式 Saver Mode	是 (YES)	
电池类型 Battery Type	VRLA / GEL / GEL DEEP CYCLE / LITHIUM(铅酸电池, 胶体电池, 胶体深循环电池和锂电池)	
输入保护 Input Protection	市电下: 输入过流无熔丝开关保护 Input over current protection with fuse	
输出保护 Output Protection	逆变下: 过载保护、短路保护、低压保护、电池反接保护(保险管) Overload, short circuit, High & low voltage, battery reverse protections	
最大市电充电电流 Max AC Charging Current	29A	60A
锁机电压 Low Level disconnect	40V-42V	40V-42V
最大光伏开路电压 Maximum PV array power	48V:MPPT 150VDC	48V:MPPT 150VDC
最大光伏充电电流 Maximum solar charge current	120A	
最大光伏阵列功率 Maximum solar PV Watt	6100W	
并机接口 Parallel Interface	有并机功能 Support Parallel	
LED指示状态 LED Indicator status	AC Line In:Green 市电灯:绿色; Inverter: Green 逆变灯:绿色 Charging:Yellow 充电灯:黄色; Alarm: Red 故障灯:红色	
LCD指示灯状态 LCD indicator	AC输入电压/输入频率/PV电压/PV电流/输出电压/输出频率/电池电压/负载电流等 AC input voltage/input frequency, PV voltage,/PV current /Output Voltage Frequency/Battery voltage/Load current etc.	
低电池电压警报 Low battery alarm	声音警报-5秒哔声 Audible alarm-5 seconds beeping	
过载报警 Overload alarm	声音警报-长鸣 Audible alarm-continuous beeping	
错误 Fault	声音警报-长鸣 Audible alarm-continuous beeping	
存放温度 Storage temperature	-15°C~45°C	
工作温度 Operating temperature	0°C~60°C	
相对湿度 Relative temperature	-10°C~90°C无凝结 no condensation	
噪音 Noise (db)	<55dB	



逆变器BA系列 SOLAR INVERTER BA SERIES 3KW~10KW

应用范围 Application



产品特性 Features

- 后备长延时设计, 可在电池模式下长时间加载
External battery design, can be loaded under the battery mode for a long time
- 市电自启功能
Starting Up Automatically when mains input
- 带并机功能
Support Parallel
- 大电流充电功能
High current charging function
- 宽交流输入范围
Wide AC input range
- 关机充电功能
Shutdown charging function
- 卓越的微处理器确保可靠运行
High efficiency design for optimized battery performance
- 兼容发电机
Compatible generator
- 通过显示器监控工作状态
Monitor the working status through the display
- 自动调节市电升压、降压、稳压输出
Automatically adjust the mains boost, buck, and stabilize the voltage output

型号 Model	BA3024JMh	BA5548JMh	BA10048MH
输入 Input			
输入制式 Input system	L+N+PE		
额定输入电压 Rated input voltage	208/220/230/240VAC		
电压范围 Voltage range	154-264VAC±3V (正常模式 Normal mode) 185-264VAC±3V (UPS模式 UPS mode)		
频率范围 Frequency range	50Hz/60Hz(自适应 Self-adaption)		
输出 Output			
输出额定功率 Output rated power	3000W	5500W	10000W
输出电压 Output voltage	208/220/230/240VAC±5%		
输出频率 Output frequency	50/60Hz±0.1%		
转换时间 Transfer time	计算机设备 Computer equipment 10ms, 家用电器 Household appliances 20ms		
波形 Waveform (battery)	纯正弦波 Pure sine wave		
峰值功率 Peak power	6000VA	11000VA	20000VA
过载能力 Overload capacity	电池模式 Battery mode: 1min@102%~110% Load 10s@110%~130% Load 3s@130%~150% Load 200ms@>150% Load		
峰值效率 (电池模式) Peak efficiency (battery mode)	>94%		
电池 Battery			
额定电压 Nominal voltage	24Vdc	48Vdc	48Vdc
恒压充电电压 (可设) Constant charge voltage (optional)	28.2Vdc	56.4Vdc	56.4Vdc
浮充充电电压 (可设) Floating charging voltage (optional)	27Vdc	54Vdc	54Vdc
充电器 Charger			
PV充电方式 PV charging mode	MPPT	MPPT	双路MPPT Double MPPT
PV最大输入功率 PV Maximum input power	4000W	5500W	2×5500W
MPPT输入电压范围 MPPT Input voltage range	120-500Vdc		
最佳Vmp工作范围 Optimal Vmp operating range	300-400Vdc		
最大PV输入电压 Maximum PV input voltage	500Vdc		
最大PV充电电流 Maximum PV charging current	100A	100A	160A
最大市电充电电流 Maximum mains charging current	100A	60A	160A
最大充电电流 Maximum charging current	100A	100A	160A
并机接口 Parallel interface	无并机功能 Not Support Parallel	有并机功能 Support Parallel	无并机功能 Not Support Parallel
环境参数 Environmental parameter	-15°C~45°C		
运行环境温度 Operating ambient temperature	0°C~60°C		
海拔高度 Ork Altitude	-10°C~90°C 无凝结 no condensation		
噪音 Noise	<55dB		
尺寸 Dimension L*W*H(mm)	495*312*125		533*621*142
净重 Weight(kg)	7.5kg	8.5kg	/



太阳能系统SG系列
SOLAR SYSTEM SG SERIES
1000W-2000W

应用范围
Application



产品特性
Features

- 纯正弦波输出
Pure sine wave output
- 一体式光伏发电储能系统
Integrated photovoltaic power generation energy storage system
- 带载能力强
Superior AC loading capacity
- 内置太阳能控制器和免维护电池
Built-in Solar Charge&maintenance-free battery
- 充电效率高
High-efficient Charging
- 便携式和可移动的
Portable & Removable
- 可选内置铅酸 / 内置锂电池
Inbuilt Lead-acid battery / Inbuilt Lithium battery

型号 Model	SG1012-100P	SG1012-150LP	SG1524-100M	SG1524-150LM	SG2024-100M	SG2024-150LM
电池电压 Battery Voltage	12V		24V			
内置的电池规格 In-built battery specification	铅酸100AH/12V	锂电150AH/12.8V	铅酸100AH/12V*2	锂电150AH/25.6V	铅酸100AH/12V*2	锂电150AH/25.6V
额定功率 Rated power	1000W	1000W	1500W	1500W	2000W	2000W
输出电压 Output Voltage	110VAC/220VAC					
输出频率 Output Frequency	50/60Hz					
输出波形 Output Waveform	纯正弦波 Pure Sine Wave					
额定电压 Rated Voltage	220VAC---(* means an optional function)					
充电电流 Charge Current	12A (10-20A可调)	20A	12A (10-18A可调)	18A	20A (15-30A可调)	30A
最大光伏电压 Maximum Photovoltaic Voltage(VDC)	≤50V		≤145V			
充电电压 Charge Voltage (VDC)	13.7V		27.4V			
额定充电电流 Rated Charge Current(A)	(PWM)30A(可选60A)		(MPPT)30A (可选60A)			
最大功率 Maximum Power(Wp)	360Wp(720Wp)		800Wp(1600Wp)			
过充保护电压 Voltage of overcharge protection(VDC)	14.2V		28.4V			
过充恢复电压 Voltage of overcharge recovery(VDC)	14.0V		28.0V			
浮充电压 Voltage of floating charge(VDC)	13.7V		27.4V			
高压保护电压 Voltage of high-voltage protection(VDC)	16V		32V			
高压恢复电压 Voltage of high-voltage recovery(VDC)	15.2V		30.4V			
低压恢复电压 Voltage of low-voltage recovery(VDC)	13V		26V			
低压保护电压 Voltage of low-voltage protection(VDC)	11V		22V			
5VDC USB输出接口 5VDC USB Output Port	2units/MAX 2A					
12VDC输出接口 12VDC Output Port	2 DC Ports (MAX 5A)					
排风扇启动温度 Starting Temperature of the exhaust fan	>45°C					
操作环境温度 Ambient Temperature for operation	0-40°C					
储存环境温度 Ambient Temperature for storage	-25-55°C					
操作/储存条件 Operation/Storage Conditions	0-90%(no condensation)					
净重(公斤)Net weight (KG)	45	/	85	/	86	/
机器尺寸 size (L*W*H)mm	423*260*453		430*380*534			



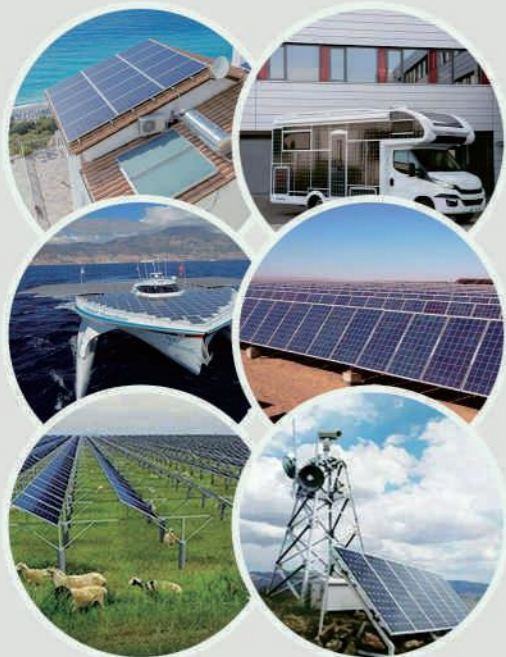
ML系列

ML series



控制器ML系列 MPPT ML SERIES 40A-100A

应用范围 Application



产品特性 Features

-  可选支持WIFI /GPRS
Can support WIFI / GPRS
-  12/24/36/48V自动适应
12/24/36/48V adaptive
-  三段式智能充电
Three-stage smart charging
-  可参数可调节
Adjustable parameters by pressing buttons
-  可接铅酸电池/ 锂电池/水电池等
It can connect Lead acid batter/lithium battery/waterbattery

型号 Model	ML40415	ML60415	ML80415	ML100415	ML40825	ML60825	ML80825	ML100825
系统电压 System voltage	12V/24V/36V/48V (Adaptive) 自动识别				96V			
额定电流 Rated current	40A	60A	80A	100A	40A	60A	80A	100A
充电模式 Charging mode	MPPT最大功率点追踪MPPT maximum power point tracking							
适用电池类型 Applicable battery type	可接铅酸电池/ 锂电池/水电池等 It can connect Lead acid batter/lithium battery/waterbattery							
充电方式 Charging method	三阶段: 恒流, 恒压, 浮充 Three stages: constant current, constant voltage, floating charge							
光伏输入最大开路电压 (VOC) PV input maximum open circuit voltage (VOC)	DC150V				DC250V			
启动时间 Starting time	≤10s							
Dynamic response recovery time	≤500us							
静态功耗 Static power	≤4W		≤8W		≤4W		≤8W	
跟踪效率 MPPT Tracking efficiency	≥99.5%							
最大转换效率 Max efficiency	≥98%							
控制器系统识别工作电压范围 System identified voltage range	8-64V				72~128V			
最大功率点 工作电压范围 Maximum power point operating voltage range	12V	20~150V			128~250V			
	24V	36~150V						
	36V	48~150V						
	48V	64~150V						
额定充电功率 Rated charging power	12V	540W	800W	1040W	1300W	/		
	24V	1080W	1600W	2080W	2600W			
	36V	1620W	2400W	3120W	3900W			
	48V	2160W	3200W	4160W	5200W			
	96V	/						
负载电压 Load voltage	同蓄电池电压 Same as Battery Voltage							
额定负载电流 Rated load current	40A							
Load控制方式 Load control method	常开常关模式/时控模式/光控模式 Normally ON/OFF mode/time control mode/light control mode							
负载欠压保护 Load undervoltage protection	10.5V*N (N stands for batteries number) Parameters can be adjustable 默认10.5V*N (N为电池数) 可调节参数							
散热方式 Cooling	风冷 Air Cooling							
显示方式 Display	高清LCD背光显示 HD LCD backlight display							
保护功能 Protections	输入输出过欠压保护、输入输出防反接保护、机器过温保护、负载过流保护 Input and output over/low-voltage protection, input and output anti-reverse protection, over-temperature protection, load over-current protection							
温度补偿系数 Temperature compensation coefficient	-3mV/°C/2V							
工作温度 Working temperature	-20°C~+50°C							
储存温度 Storage temperature	-40°C~+70°C							
噪音 Noise (dB)	≤50dB							
湿度 Humidity	0~90%RH							
海拔高度 Working altitude	0~3000M							
机身尺寸 (mm) Dimension, LxWxH	219*260*110		275*348*109		219*260*110		275*348*109	
净重 (KG) Net Weight (KG)	2.8KG		4.6KG	5.2KG	2.8KG		4.6KG	5.2KG
推荐接线 Suggested wire specification	7AWG/10mm ²	6AWG/16mm ²	4AWG/25mm ²	2AWG/35mm ²	7AWG/10mm ²	6AWG/16mm ²	4AWG/25mm ²	2AWG/35mm ²



LB系列

LB series



锂电池LB系列

LITHIUM BATTERY LB SERIES 100-300AH

应用范围 Application



产品特性 Features

-  采用高稳定性的磷酸铁锂电池，通过了 CE、UL 认证，安全可靠
Adopt high stability of lithium iron phosphate battery, through CE, UL certification, safe and reliable;
-  具备电压、电流、温度检测及保护功能及短路保护功能，防反接功能
Come with voltage, current, temperature detection and protection function and short circuit protection function, as well as anti-reverse connection function;
-  具备电池组容量及循环次数计算功能
Have the function of calculating the battery pack capacity and cycle times;
-  较宽的工作温度范围，放电温度范围可达 -20°C ~ 50°C
Wide working temperature range, and the discharge temperature range can reach -20°C ~ 50°C;
-  具备弱电开关及休眠和唤醒功能和充电唤醒功能
With weak current switch, dormancy and wake up function and charging and wake up function;
-  具备并联通讯功能，RS485 通讯及上位机监控功能，以及 CAN 通讯
With parallel communication function, RS 485 communication and upper computer monitoring function, and CAN communication;
-  充电限流及预充功能、多个产品（新旧电池）并联功能
Charging current limiting and precharging function, multiple products (old and new batteries);
-  可定制铅酸电池混用并联
lead acid batteries can be mixed and parallel;
-  内置自动灭火装置，产品更安全
Built-in automatic fire extinguishing device, the product is safer;
-  支持用户修改逆变器通讯协议: Victron-维克托, Pylon-派能, Deye-德业, SMA, 古瑞瓦特, 固德威, 日月元, 鹏诚, 首航, 微站, 迈格瑞能, 拓宝。
Support modify the inverter communication protocol: Victron-Victor, Pylon-energy, Deye-Deye, SMA, Growatt, Goodway, Moon, Pengcheng, Shouhang, Microstation, Magineng, Tubao.

型号 Model	LB100AH/48VKA (B)	LB200AH/48VKA (B)	LB300AH/48VKA (B)	LB200AH/24VKA (B)
工作参数 Product specification				
电池电压 (V) Battery voltage (V)	51.2	51.2	51.2	25.6
电池容量 (V) Battery capacity (AH)	100	200	300	200
最高充电电压 (V) Maximum charging voltage (V)	58.4	58.4	58.4	29.2
最大充电电流 (A) Maximum charging current (A)	50	50	50	50
最大放电电流 (A) Maximum discharge current (A)	100	100	100	100
工作电压范围 (V) Working voltage range (V)	44-58.4	44-58.4	44-58.4	22-29.2
充电温度范围 Charging temperature range	0°C~60°C (0°C以下工作, 会影响电池容量发挥 (work under below 0°C, which will affect the battery capacity performance))			
放电温度范围 Discharge temperature range	-20°C~60°C (0°C以下工作, 会影响电池容量发挥) (work under below 0°C, which will affect the battery capacity performance))			
存储环境 Storage environment	-40°C~55°C @ 60%±25% 湿度 Humidness			
结构形状 Structural shape				
尺寸 Size (长*宽*高 mm) Dimensions (mm)	480*690*195	680*760*195	970*760*195	480*690*195
重量 (KG) Weight (KG)	62	106	148	62
结构方式 Structure mode	壁挂式 Wall-mounted			
机器界面 Interface				
LCD 显示屏 LCD display	显示电池容量及输出电压及电流 battery capacity/the output voltage/current			
LED 指示灯 LED indicator light	显示电池容量及运行、故障 battery capacity/working status/fault			
通讯接口 communication interface	标配 RS232、RS485、CAN			

太阳能逆变器 Solar inverter



产品参数 Product parameter



型号 Model number	配置 Disposition	光伏板 Photovoltaic panel	电池包 Battery pack	充电时长 Charging time	尺寸(mm) Size (mm)	装箱数量 Packing quantity
1600W	3.2kg	330W/piece*2	/	/	260*219*110	1pcs
3000W	20.2kg	330W/piece*4	3kw/h	3-4h	520*385*195	1pcs
3000W	20.2kg	330W/piece*6	3kw/h	2-2.5h	657*514*257	1pcs
5000W	30.5kg	330W/piece*6	5kw/h	3-4h	660*460*270	1pcs
5000W	30.5kg	330W/piece*9	5kw/h	2-2.5h	657*514*257	1pcs
10000W	54kg	550W/piece*9	10kw/h	2.5-3h	660*460*270	1pcs

太阳能逆变器 Solar inverter



产品参数 Product parameter



型号 Model number	光板数量 Number of light plates	电池包 Battery pack	装箱数量 Packing quantity
10KW*2	550W/piece*18	20-30kw/h	1pcs
10KW*3	550W/piece*27	30-40kw/h	1pcs
10KW*4	550W/piece*36	40-60kw/h	1pcs
10KW*5	550W/piece*45	50-80kw/h	1pcs
10KW*6	550W/piece*54	80-100kw/h	1pcs

广泛应用于商场、展厅、停车场、运动场、体育馆、广告牌、公园、雕刻、国家绿化照明工程、楼梯等。
Widely used in shopping malls, exhibition halls, parking lots, sports venues, stadiums, billboards, parks, carving, national green lighting projects, stairs and so on.

太阳能集成一体化路灯



产品参数 Product parameter



型号 Model number	灯体尺寸(mm) Lamp body size (mm)	产品材质 Product material	建议高度 Suggested height	外箱尺寸(mm) Outer box size (mm)	装箱数量 Packing quantity
F-30	800*364*105	铝型材+PC	6米	810*370*110	1pcs
F-40	923*364*105	铝型材+PC	7米	930*370*110	1pcs
F-50	1030*64*105	铝型材+PC	8米	1050*37*110	1pcs
F-60	1206*364*105	铝型材+PC	9米	1210*370*110	1pcs

太阳能集成一体化路灯



产品参数 Product parameter



型号 Model number	灯体尺寸(mm) Lamp body size (mm)	产品材质 Product material	建议高度 Suggested height	外箱尺寸(mm) Outer box size (mm)	装箱数量 Packing quantity
Y-20	686*351*45	Aluminumprofile+PC	6m	690*355*50	1pcs
Y-30	839*351*45	Aluminumprofile+PC	7m	845*355*50	1pcs
Y-40	1081*351*45	Aluminumprofile+PC	8m	1090*355*50	1pcs
Y-50	1231*351*45	Aluminumprofile+PC	9m	1240*355*50	1pcs

广泛应用于商场、展厅、停车场、运动场、体育馆、广告牌、公园、雕刻、国家绿化照明工程、楼梯等。
Widely used in shopping malls, exhibition halls, parking lots, sports venues, stadiums, billboards, parks, carving, national green lighting projects, stairs and so on.

太阳能集成一体化路灯 Solar integrated street light



产品参数 Product parameter



型号 Model number	灯体尺寸(mm) Lamp body size (mm)	产品材质 Product material	建议高度 Suggested height	外箱尺寸(mm) Outer box size (mm)	装箱数量 Packing quantity
4-head	899*402*55	Aluminum profile+PC	6-7m	910*410*60	1pcs
4-head	1320*402*55	Aluminum profile+PC	8-10m	1350*410*60	1pcs
4-head	1630*402*55	Aluminum profile+PC	10-12m	1650*410*60	1pcs

太阳能集成路灯 Solar integrated street lamp



产品参数 Product parameter



型号 Model number	灯体尺寸(mm) Lamp body size (mm)	产品材质 Product material	建议高度 Suggested height	外箱尺寸(mm) Outer box size (mm)	装箱数量 Packing quantity
8头	900*400*80	Aluminum profile +PC	6-7米	920*420*100	1pcs
12头	1230*400*80	Aluminum profile +PC	7-8米	1250*420*100	1pcs
16头	1470*400*80	Aluminum profile +PC	8-10米	1500*420*100	1pcs
20头	1760*400*80	Aluminum profile +PC	10-12米	1800*420*100	1pcs

广泛应用于商场、展厅、停车场、运动场、体育馆、广告牌、公园、雕刻、国家绿化照明工程、楼梯等。
Widely used in shopping malls, exhibition halls, parking lots, sports venues, stadiums, billboards, parks, carving, national green lighting projects, stairs and so on.

太阳能分体路灯 Solar split street light



产品参数 Product parameter



型号 Model number	灯体尺寸(mm) Lamp body size (mm)	产品材质 Product material	建议高度 Suggested height	外箱尺寸(mm) Outer box size (mm)	装箱数量 Packing quantity
100W	520*200*90	Diecastaluminum+PC	6m	690*355*50	1pcs
150W	550*230*90	Diecastaluminum+PC	7-8m	845*355*50	1pcs

太阳能集成一体化路灯 Solar integrated street light



产品参数 Product parameter



型号 Model number	灯体尺寸(mm) Lamp body size (mm)	产品材质 Product material	照射面积 Irradiated area	外箱尺寸(mm) Outer box size (mm)	装箱数量 Packing quantity
30W	495*210	Aluminium alloy	60 ²	680*270*100	1pcs
60W	695*210	Aluminium alloy	90 ²	880*270*100	1pcs
90W	895*210	Aluminium alloy	120 ²	1080*270*100	1pcs
120W	1070*210	Aluminium alloy	150 ²	1255*270*100	1pcs

广泛应用于商场、展厅、停车场、运动场、体育馆、广告牌、公园、雕刻、国家绿化照明工程、楼梯等。
Widely used in shopping malls, exhibition halls, parking lots, sports venues, stadiums, billboards, parks, carving, national green lighting projects, stairs and so on.

自我清洁太阳能路灯 self cleaning



太阳能路灯 Solar street lamp



产品参数 Product parameter



型号 Model number	灯体尺寸(mm) Lamp body size (mm)	产品材质 Product material	建议高度 Suggested height	外箱尺寸(mm) Outer box size (mm)	装箱数量 Packing quantity
45W	998*373*50	Aluminum profile +PC	6-7米	1000*375*55	1pcs
60W	1233*373*50	Aluminum profile +PC	7-8米	1235*375*55	1pcs
80W	1543*373*50	Aluminum profile +PC	8-10米	1545*375*55	1pcs
100W	1863*373*50	Aluminum profile +PC	10-12米	1868*375*55	1pcs
120W	2208*373*5	Aluminum profile +PC	12-14米	2210*375*55	1pcs

广泛应用于商场、展厅、停车场、运动场、体育馆、广告牌、公园、雕刻、国家绿化照明工程、楼梯等。
Widely used in shopping malls, exhibition halls, parking lots, sports venues, stadiums, billboards, parks, carving, national green lighting projects, stairs and so on.

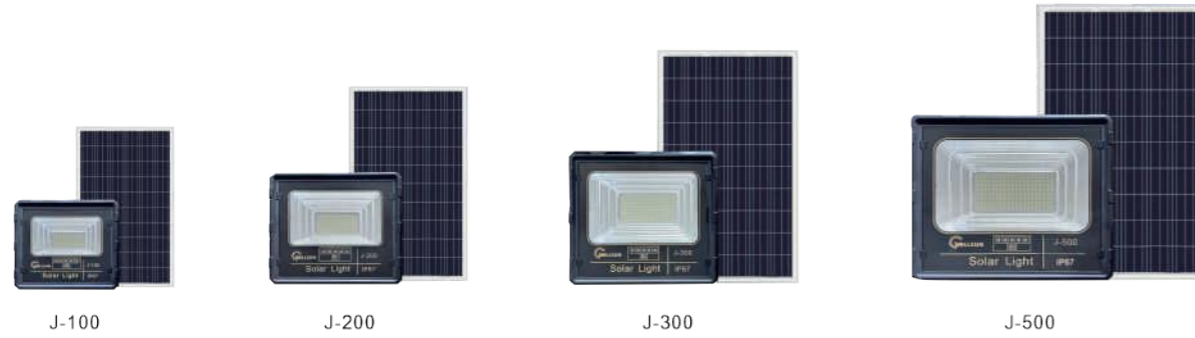
产品参数 Product parameter



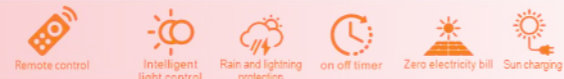
型号 Model number	灯体尺寸(mm) Lamp body size (mm)	产品材质 Product material	建议高度 Suggested height	外箱尺寸(mm) Outer box size (mm)	装箱数量 Packing quantity
45W	998*373*50	Aluminum profile +PC	6-7米	1000*375*55	1pcs
60W	1233*373*50	Aluminum profile +PC	7-8米	1235*375*55	1pcs
80W	1543*373*50	Aluminum profile +PC	8-10米	1545*375*55	1pcs
100W	1863*373*50	Aluminum profile +PC	10-12米	1868*375*55	1pcs
120W	2208*373*5	Aluminum profile +PC	12-14米	2210*375*55	1pcs

广泛应用于商场、展厅、停车场、运动场、体育馆、广告牌、公园、雕刻、国家绿化照明工程、楼梯等。
Widely used in shopping malls, exhibition halls, parking lots, sports venues, stadiums, billboards, parks, carving, national green lighting projects, stairs and so on.

星光聚宝盆 A cornucopia of stars



产品参数 Product parameter

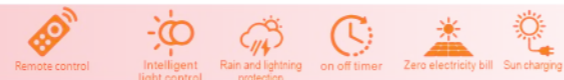


型号 Model number	灯体尺寸(mm) Lamp body size (mm)	产品材质 Product material	照射面积 Irradiated area	外箱尺寸(mm) Outer box size (mm)	装箱数量 Packing quantity
J-100	253*225*58	ABSplastic+temperedglass	50-80m ²	470*315*275	10pcs
J-200	280*248*73	ABSplastic+temperedglass	80-120m ²	520*395*300	10pcs
J-300	327*290*83	ABSplastic+temperedglass	120-150m ²	600*435*345	10pcs
J-500	363*310*87	ABSplastic+temperedglass	150-180m ²	470*375*330	5pcs

星耀聚宝盆 A cornucopia of stars



产品参数 Product parameter



型号 Model number	灯体尺寸(mm) Lamp body size (mm)	产品材质 Product material	照射面积 Irradiated area	外箱尺寸(mm) Outer box size (mm)	装箱数量 Packing quantity
R-100	252*182*62	Diecastaluminum+PC	50-80m ²	410*350*285	10pcs
R-200	292*222*62	Diecastaluminum+PC	100-150m ²	485*350*330	10pcs
R-300	330*260*62	Diecastaluminum+PC	180-220m ²	565*350*368	10pcs
R-600	370*300*62	Diecastaluminum+PC	260-300m ²	410*350*330	5pcs

广泛应用于商场、展厅、停车场、运动场、体育馆、广告牌、公园、雕刻、国家绿化照明工程、楼梯等。
Widely used in shopping malls, exhibition halls, parking lots, sports venues, stadiums, billboards, parks, carving, national green lighting projects, stairs and so on.

王者系列 King series



产品参数 Product parameter



型号 Model number	灯体尺寸(mm) Lamp body size (mm)	产品材质 Product material	照射面积 Irradiated area	外箱尺寸(mm) Outer box size (mm)	装箱数量 Packing quantity
W-200	388*193	ABS Engineering plastics + solar panels	30-50 ²	495*315*235	5pcs
W-300	484*218	ABS Engineering plastics + solar panels	50-80 ²	633*315*255	5pcs
W-400	620*238	ABS Engineering plastics + solar panels	80-120 ²	733*315*255	5pcs
W-500	720*240	ABS Engineering plastics + solar panels	120-150 ²	833*330*255	5pcs

新奔驰系列 New Mercedes-Benz series



产品参数 Product parameter



型号 Model number	灯体尺寸(mm) Lamp body size (mm)	产品材质 Product material	照射面积 Irradiated area	外箱尺寸(mm) Outer box size (mm)	装箱数量 Packing quantity
F-300	447*70*342	ABS Engineering plastics + solar panels	150 ²	430*360*470	5pcs
F-400	597*70*342	ABS Engineering plastics + solar panels	200 ²	620*350*365	4pcs
F-600	677*70*342	ABS Engineering plastics + solar panels	250 ²	695*350*365	4pcs

广泛应用于商场、展厅、停车场、运动场、体育馆、广告牌、公园、雕刻、国家绿化照明工程、楼梯等。
Widely used in shopping malls, exhibition halls, parking lots, sports venues, stadiums, billboards, parks, carving, national green lighting projects, stairs and so on.

UFO庭院灯系列 UFO garden light series



H-800



产品参数 Product parameter



型号 Model number	灯体尺寸(mm) Lamp body size (mm)	产品材质 Product material	照射面积 Irradiated area	外箱尺寸(mm) Outer box size (mm)	装箱数量 Packing quantity
H-800	550*69	ABS Engineering plastics + solar panels	80-120m ²	585*380*570	5pcs



T-TL-011 天狼系列 Skywolf series



产品参数 Product parameter



型号 Model number	灯体尺寸(mm) Lamp body size (mm)	产品材质 Product material	照射面积 Irradiated area	外箱尺寸(mm) Outer box size (mm)	装箱数量 Packing quantity
50W	185*163*50	Die-castaluminum+temperedglass	100 ²	560*365*435	40pcs
100W	237*204*55	Die-castaluminum+temperedglass	150 ²	440*335*540	20pcs
200W	290*250*55	Die-castaluminum+temperedglass	200 ²	550*305*335	10pcs
300W	394*330*55	Die-castaluminum+temperedglass	300 ²	655*325*390	10pcs

应用场所: 公园、广场、体育场、舞台、广告牌、景观照明、道路照明、桥梁、户外场所等。
Application places: parks, squares, stadiums, stages, billboards, landscape lighting, road lighting, Bridges, outdoor places, etc.

金刚模组 Diamond module



产品参数 Product parameter



型号 Model number	灯体尺寸(mm) Lamp body size (mm)	使用电压 Service voltage	产品材质 Product material	照射面积 Irradiated area	外箱尺寸(mm) Outer box size (mm)	装箱数量 Packing quantity	质保时间 Warranty period
100w	495*325*80	85-265V	Diecastaluminum+PC	30 ²	500*340*90	1pcs	2/3/5years
150w	575*323*80	85-265V	Diecastaluminum+PC	40 ²	590*340*90	1pcs	2/3/5years
200w	655*323*80	85-265V	Diecastaluminum+PC	60 ²	670*340*90	1pcs	2/3/5years
250w	735*323*80	85-265V	Diecastaluminum+PC	100 ²	750*340*90	1pcs	2/3/5years
300w	815*323*80	85-265V	Diecastaluminum+PC	150 ²	830*340*90	1pcs	2/3/5years

模组投光灯 Module floodlight



产品参数 Product parameter



型号 Model number	灯体尺寸(mm) Lamp body size (mm)	使用电压 Service voltage	产品材质 Product material	照射面积 Irradiated area	外箱尺寸(mm) Outer box size (mm)	装箱数量 Packing quantity
80W	388*193	85-265V	Die cast aluminum +PC	80 ²	680*450*450	5pcs
160W	484*218	85-265V	Die cast aluminum +PC	100 ²	680*480*480	5pcs
240W	620*238	85-265V	Die cast aluminum +PC	120 ²	685*540*540	5pcs
320W	720*240	85-265V	Die cast aluminum +PC	150 ²	680*480*480	5pcs

应用场所: 公园、广场、体育场、舞台、广告牌、景观照明、道路照明、桥梁、户外场所等。
Application places: parks, squares, stadiums, stages, billboards, landscape lighting, road lighting, Bridges, outdoor places, etc.

模组三号 Module 3



100w 150w 200w

产品参数 Product parameter



型号 Model number	灯体尺寸(mm) Lamp body size (mm)	产品材质 Product material	使用电压 Service voltage	外箱尺寸(mm) Outer box size (mm)	装箱数量 Packing quantity	质保时间 Warranty period
50w	480*360*110	Diecastaluminum+PC	85-265V	490*360*110	1pcs	2/3/5years
100w	570*360*110	Diecastaluminum+PC	85-265V	580*360*110	1pcs	2/3/5years
150w	660*360*110	Diecastaluminum+PC	85-265V	670*360*110	1pcs	2/3/5years
200w	740*360*110	Diecastaluminum+PC	85-265V	760*360*110	1pcs	2/3/5years
250w	835*360*110	Diecastaluminum+PC	85-265V	850*360*110	1pcs	2/3/5years
300w	920*360*110	Diecastaluminum+PC	85-265V	940*360*110	1pcs	2/3/5years

模组七号/工程款310 Module No. 7 / Project 310



100w 150w 200w

产品参数 Product parameter



型号 Model number	灯体尺寸(mm) Lamp body size (mm)	产品材质 Product material	使用电压 Service voltage	外箱尺寸(mm) Outer box size (mm)	装箱数量 Packing quantity	质保时间 Warranty period
100w	505*310*100	Diecastaluminum+PC	85-265V	530*320*110	1pcs	2/3/5years
150w	565*310*100	Diecastaluminum+PC	85-265V	580*320*110	1pcs	2/3/5years
200w	645*310*100	Diecastaluminum+PC	85-265V	670*320*110	1pcs	2/3/5years
250w	720*310*100	Diecastaluminum+PC	85-265V	760*320*110	1pcs	2/3/5years
300w	800*310*100	Diecastaluminum+PC	85-265V	850*320*110	1pcs	2/3/5years
350w	880*310*100	Diecastaluminum+PC	85-265V	930*320*110	1pcs	2/3/5years

天鹰模组 The Skyhawk module



100w 150w 200w 250w

产品参数 Product parameter



型号 Model number	灯体尺寸(mm) Lamp body size (mm)	产品材质 Product material	使用电压 Service voltage	外箱尺寸(mm) Outer box size (mm)	装箱数量 Packing quantity	质保时间 Warranty period
100w	676*340*118	Diecastaluminum+PC	85-265V	700*360*120	1pcs	2/3/5years
150w	757*340*118	Diecastaluminum+PC	85-265V	780*360*120	1pcs	2/3/5years
200w	838*340*118	Diecastaluminum+PC	85-265V	860*360*120	1pcs	2/3/5years
250w	919*340*118	Diecastaluminum+PC	85-265V	940*360*120	1pcs	2/3/5years

广泛应用于商场、展厅、停车场、运动场、体育馆、广告牌、公园、雕刻、国家绿化照明工程、楼梯等。
Widely used in shopping malls, exhibition halls, parking lots, sports venues, stadiums, billboards, parks, carving, national green lighting projects, stairs and so on.

模组1号A/310 Module 1 A/310



100w 150w 200w 300w

产品参数 Product parameter



型号 Model number	灯体尺寸(mm) Lamp body size (mm)	产品材质 Product material	使用电压 Service voltage	外箱尺寸(mm) Outer box size (mm)	装箱数量 Packing quantity	质保时间 Warranty period
50w	370*310*80	Diecastaluminum+PC	85-265V	400*320*100	1pcs	2/3/5years
100w	440*310*80	Diecastaluminum+PC	85-265V	460*320*100	1pcs	2/3/5years
150w	520*310*80	Diecastaluminum+PC	85-265V	540*320*100	1pcs	2/3/5years
200w	595*310*80	Diecastaluminum+PC	85-265V	620*320*100	1pcs	2/3/5years
250w	675*310*80	Diecastaluminum+PC	85-265V	700*320*100	1pcs	2/3/5years
300w	750*310*80	Diecastaluminum+PC	85-265V	760*320*100	1pcs	2/3/5years

广泛应用于商场、展厅、停车场、运动场、体育馆、广告牌、公园、雕刻、国家绿化照明工程、楼梯等。
Widely used in shopping malls, exhibition halls, parking lots, sports venues, stadiums, billboards, parks, carving, national green lighting projects, stairs and so on.

S-MZ-018 透镜模组系列 Lens module series



产品参数 Product parameter



型号 Model number	灯体尺寸(mm) Lamp body size (mm)	使用电压 Service voltage	产品材质 Product material	照射面积 Irradiated area	外箱尺寸(mm) Outer box size (mm)	装箱数量 Packing quantity	质保时间 Warranty period
50W	370*305*80	85-265V	Profile +PC	80 ²	400*320*100	1pcs	2/3/5years
100W	440*305*80	85-265V	Profile +PC	100 ²	460*320*100	1pcs	2/3/5years
150W	515*305*80	85-265V	Profile +PC	80 ²	530*320*100	1pcs	2/3/5years
200W	600*305*80	85-265V	Profile +PC	120 ²	640*320*100	1pcs	2/3/5years
250W	675*305*80	85-265V	Profile +PC	80 ²	700*320*100	1pcs	2/3/5years
300W	750*305*80	85-265V	Profile +PC	120 ²	760*320*100	1pcs	2/3/5years

S-BJ-023 宝剑系列 Sword series



产品参数 Product parameter



型号 Model number	灯体尺寸(mm) Lamp body size (mm)	使用电压 Service voltage	产品材质 Product material	照射面积 Irradiated area	外箱尺寸(mm) Outer box size (mm)	装箱数量 Packing quantity	质保时间 Warranty period
50W	500*230*80	85-265V	Die-castaluminum	50 ²	510*240*110	1PCS	2/3/5years
100W	720*280*80	85-265V	Die-castaluminum	100 ²	740*290*110	1PCS	2/3/5years
150W	860*320*80	85-265V	Die-castaluminum	150 ²	880*330*110	1PCS	2/3/5years
200W	950*330*80	85-265V	Die-castaluminum	200 ²	980*340*110	1PCS	2/3/5years
250W	1100*360*80	85-265V	Die-castaluminum	300 ²	1120*370*110	1PCS	2/3/5years

广泛应用于商场、展厅、停车场、运动场、体育馆、广告牌、公园、雕刻、国家绿化照明工程、楼梯等。
Widely used in shopping malls, exhibition halls, parking lots, sports venues, stadiums, billboards, parks, carving, national green lighting projects, stairs and so on.

S-PG-012 小苹果系列 Small Apple Series



产品参数 Product parameter

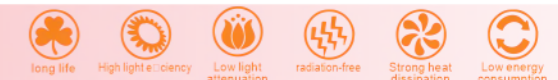


型号 Model number	灯体尺寸(mm) Lamp body size (mm)	使用电压 Service voltage	产品材质 Product material	照射面积 Irradiated area	外箱尺寸(mm) Outer box size (mm)	装箱数量 Packing quantity
10W	10*8*2	175-265V	Die-castaluminum+temperedglass	30 ²	495*210*225	70pcs
20W	11.7*9.2*2.7	175-265V	Die-castaluminum+temperedglass	40 ²	390*325*230	60pcs
30W	16*12.1*2.3	175-265V	Die-castaluminum+temperedglass	60 ²	515*325*290	60pcs
50W	20.6*16*2.9	175-265V	Die-castaluminum+temperedglass	100 ²	435*375*290	40pcs
100W	27*21.4*3	175-265V	Die-castaluminum+temperedglass	150 ²	445*395*290	20pcs
150W	32*24*4	175-265V	Die-castaluminum+temperedglass	210 ²	425*340*250	10pcs
200W	37.8*27.8*3.8	175-265V	Die-castaluminum+temperedglass	240 ²	475*400*300	10pcs

S-CF-013 非凡系列 Extraordinary series



产品参数 Product parameter



型号 Model number	灯体尺寸(mm) Lamp body size (mm)	使用电压 Service voltage	产品材质 Product material	照射面积 Irradiated area	外箱尺寸(mm) Outer box size (mm)	装箱数量 Packing quantity	质保时间 Warranty period
100W	270*210*65	85-265V	Die-castaluminum+temperedglass	90 ²	415*295*460	10pcs	2/3/5years
200W	370*285*70	85-265V	Die-castaluminum+temperedglass	120 ²	390*290*100	1pcs	2/3/5years
300W	430*315*70	85-265V	Die-castaluminum+temperedglass	150 ²	445*325*110	1pcs	2/3/5years
400W	528*330*75	85-265V	Die-castaluminum+temperedglass	170 ²	535*330*100	1pcs	2/3/5years
500W	630*330*75	85-265V	Die-castaluminum+temperedglass	195 ²	640*340*105	1pcs	2/3/5years
600W	630*330*75	85-265V	Die-castaluminum+temperedglass	225 ²	640*340*105	1pcs	2/3/5years

广泛应用于商场、展厅、停车场、运动场、体育馆、广告牌、公园、雕刻、国家绿化照明工程、楼梯等。
Widely used in shopping malls, exhibition halls, parking lots, sports venues, stadiums, billboards, parks, carving, national green lighting projects, stairs and so on.